

Thank you to our generous sponsor



Community
Solutions
Collaborative

SUMMER
2024

WiFi: JacksonTerminal213
Password: 24Jackson!

Welcome Rick Sander!

Community

Solutions

Collaborating with Cities
to achieve **Equity** and **Prosperity**

Collaborative

How a Fair Housing Study can spur thoughtful assessment and catalyze progress

Rob Breymaier, Community Solutions

Rick Sander, UCLA

Kevin Dubose and Linda Rust, City of Knoxville

August 2024

Standard Model

Provides overwhelming amounts of data without context

Limited to discrimination and disparities

Public engagement lacks baseline information and interactivity

Spits out sterile responses without context

Offers "cookie cutter" reactive strategies

Provide solutions that ignore practicality and external factors

Sits on a shelf with no significant impact

CSC Model

Provides relevant data in context

Analyzes segregation and access to opportunity in addition to discrimination and disparities

Public engagement includes initial analysis to level set and interactivity to enhance the value of feedback

Provides insight into perceptions and aspirations of residents

Offers localized proactive and systemic strategies

Includes cost-benefit analysis with solutions

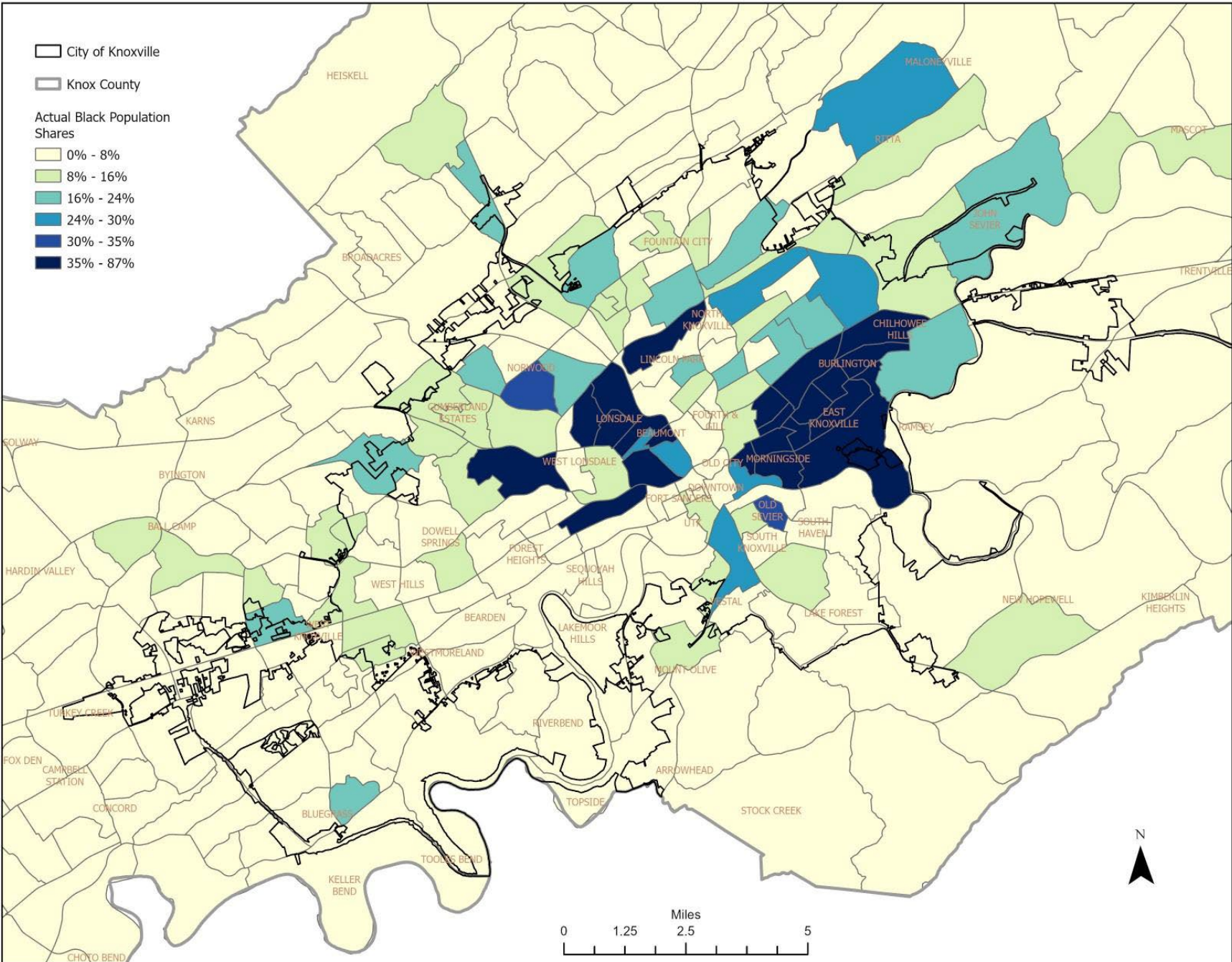
Connects to City policies, programs, and priorities to impact equity, opportunity, and prosperity

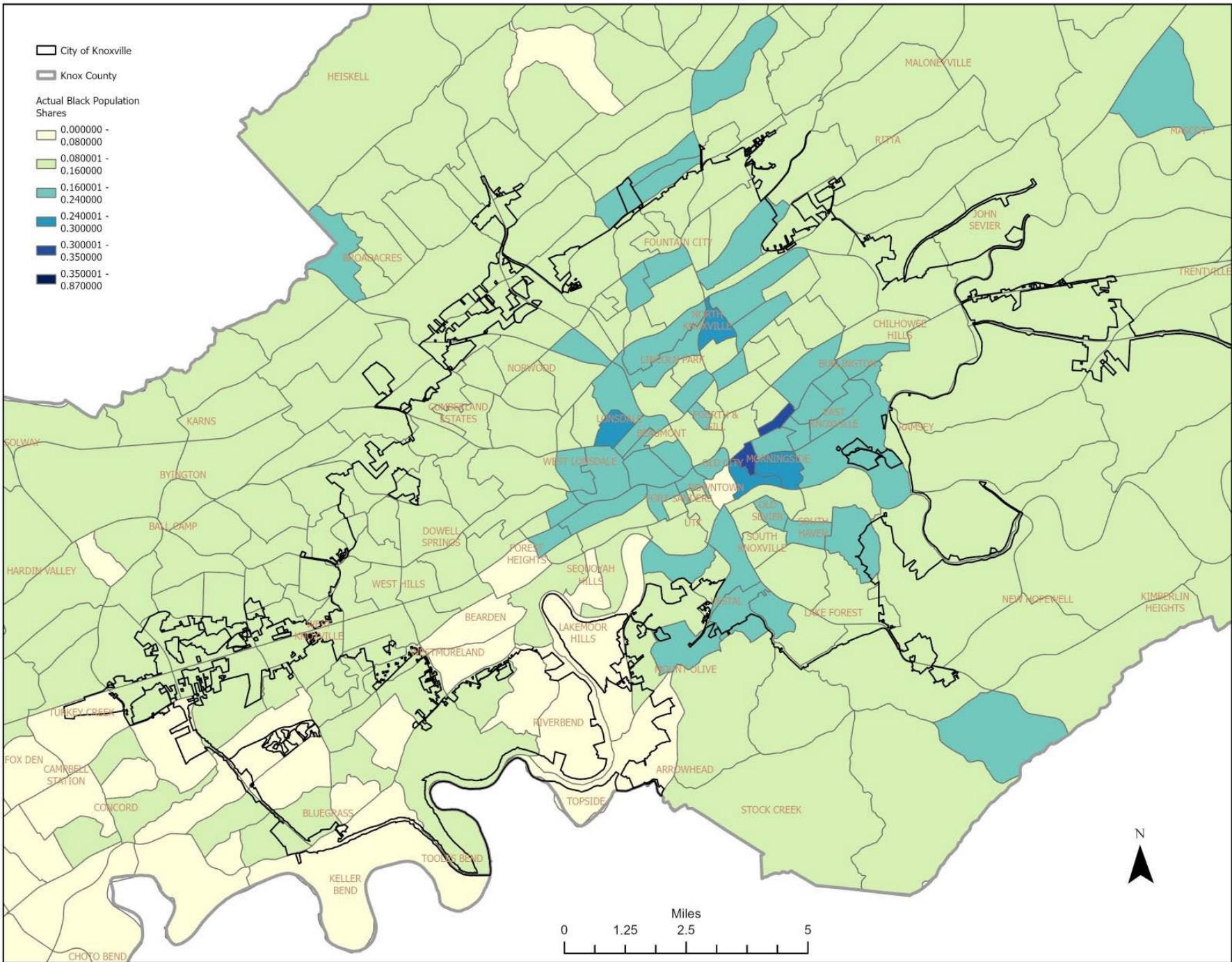
Putting meaningful numbers in context: Black-White Indices of Residential Segregation, 1990-2020

Census Year	Knox County	Nashville MSA	Memphis MSA	60 Major U.S. MSAs
1990	0.74	0.72	0.81	0.75
2000	0.69	0.68	0.76	0.73
2010	0.63	0.64	0.73	0.70
2020	0.59	0.61	0.70	0.67

It's important to understand the “bad” history but also the “good” history

Indicator of Segregation/Integration	Knox County urbanized area 1970	Knox County 2020
Share of Whites living on all-White blocks	80.0%	1.2%
Share of Whites living on blocks that are >90% White	95.0%	33.0%
Share of Blacks living on blocks that are >90% Black	65.0%	1.2%
Share of Blacks living on blocks that are >80% Black	74.0%	5.0%
Share of Blacks living on blocks that are <25% Black	9.0%	54.0%





Relative Exposures to Poverty for Tenants in Major Assisted-Housing Programs, Knoxville and Comparison Areas, 2022

	Housing Choice Vouchers	LIHTC Developments	Project-Based Section 8	Public Housing
Knoxville	1.87	1.40	2.12	1.80
Memphis	1.66	1.88	1.80	2.18
Nashville	1.78	2.13	2.82	1.73
National Average	1.76	1.79	2.31	1.91

City of Knoxville

Kevin Dubose

Director of Housing and Neighborhood Development

Linda Rust

Community Development Administrator

Let's Collaborate!

rbreymaier@CommunitySolutionsCollaborative.net

(708) 406-9373

www.CommunitySolutionsCollaborative.net

Community
Solutions Collaborating with Cities
to achieve **Equity** and **Prosperity**
Collaborative